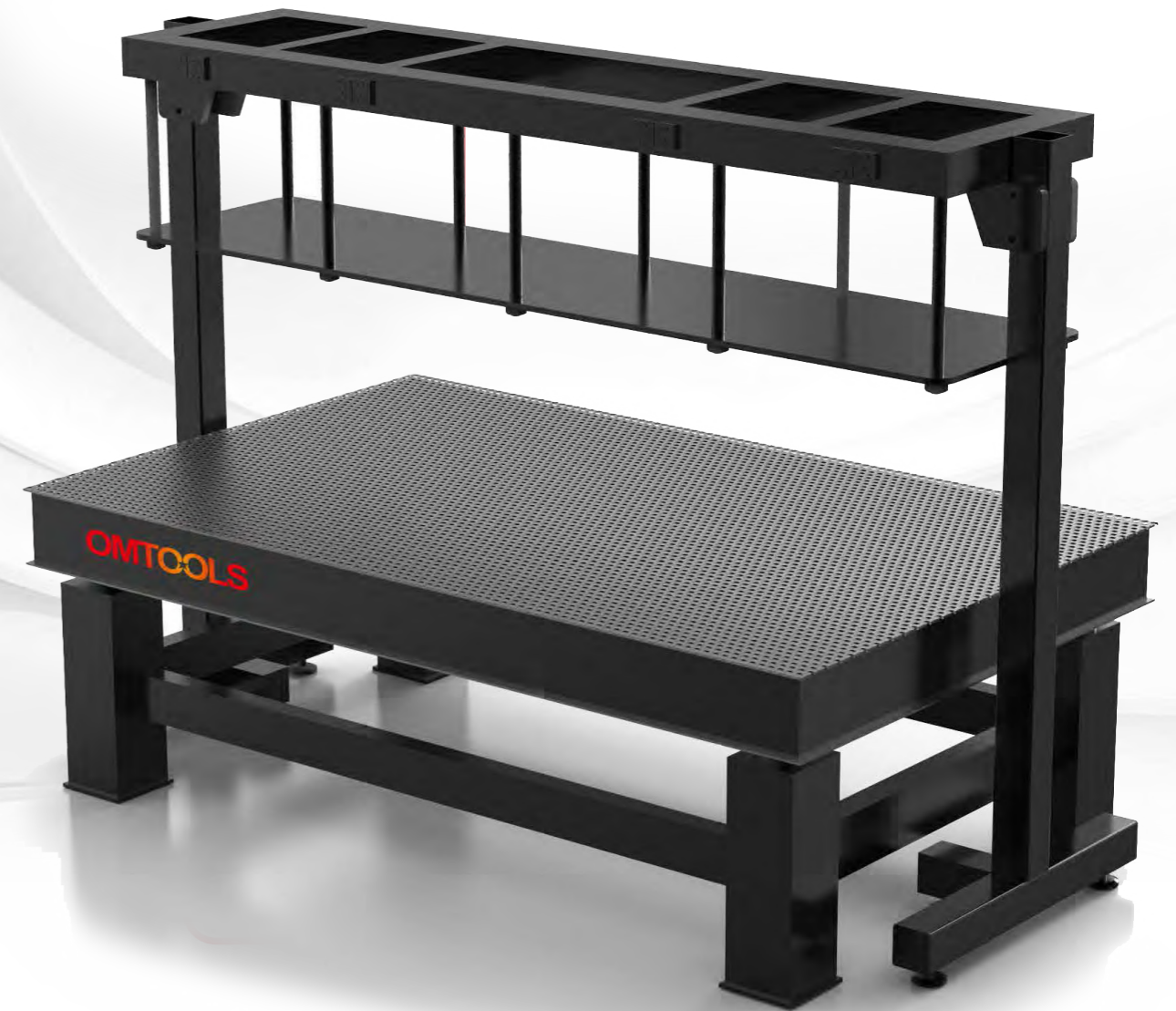


OMTOOLS

www.omtools.cn



OMTOOLS

Catalogue 2023

· Optical Table Series

Headquarters in Wuhan

Tel: 400-1618-188
Email: info@whhxykj.com
Website: www.omtools.cn



■ GGA Series Optical Breadboard

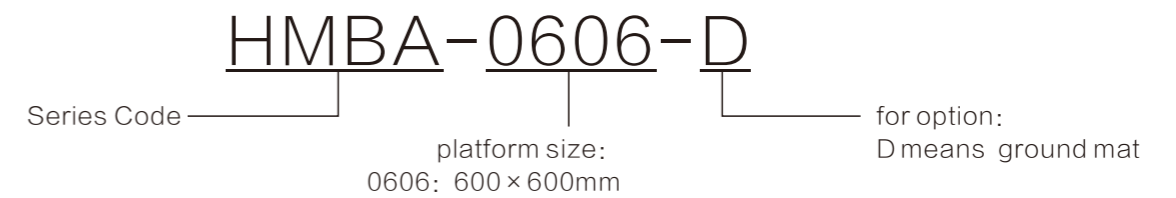
► Guide

OMTOOLS HMBA series breadboard are widely used in optical experiments, life science, precision instrument measurement, aerospace experiments etc. With 430 stainless steel on top and bottom, 4mm thick well shape core cell making the top of breadboard supper rigid, clean, and stainless, also minimize the sources of vibrations and reinforce the structural damping. The breadboard is all steel structure which ensuring the long term thermal stability.

► Features

| | | | |
|-----------------------------|--------------------------|--------------------------|----------------------|
| Breadboard Thickness (mm) | 50-300 | Screw Holes | M6、 25x25mm |
| Top Board Thickness | 6mm 430 (stainless) | Surface Flatness | ≤0.1mm/600X600mm |
| Surface | Matte | Surface Roughness (um) | ≤3.2 |
| Damping Method | Broadband Damping | Deformation | < 2um/m ² |
| Welding Core Cell | Well Shape | OEM service | support |

► Name Rule



► Specifications

| Model | platform size (mm) | thickness (mm) |
|------------|----------------------|------------------|
| HMBA0606 | 600x600 | 50/80/100 |
| HMBA075075 | 750x750 | |
| HMBA0906 | 900x600 | |
| HMBA1007 | 1000x700 | |
| HMBA1008 | 1000x800 | |
| HMBA1208 | 1200x800 | 100/150/200 |
| HMBA1509 | 1500x900 | |
| HMBA1510 | 1500x1000 | |
| HMBA1512 | 1500x1200 | |
| HMBA1609 | 1600x900 | |
| HMBA1812 | 1800x1200 | 100/150/200 |
| HMBA1815 | 1800x1500 | |
| HMBA2010 | 2000x1000 | |
| HMBA2012 | 2000x1200 | |
| HMBA2015 | 2000x1500 | |

__thickness in red are for options.



HMBB Series Optical Breadboard

► Guide

OMTOOLS HMBB series breadboard are widely used in optical experiments, life science, precision instrument measurement, aerospace experiments etc. With 430 stainless steel on top and bottom, 4mm thick well shape core cell making the top of breadboard supper rigid, clean, and stainless, also minimize the sources of vibrations and reinforce the structural damping. The breadboard is all steel structure which ensuring the long term thermal stability.

► Features

| | | | |
|---------------------|--------------------------|--------------------------|----------------------|
| Thickness (mm) | 50-300 | Surface Plane | ≤0.1mm/600X600 |
| Top Board Thickness | 6mm 430 (stainless) | Surface Roughness (um) | ≤3.2, matte surface |
| Damping Method | Broadband Damping | Deviation | < 2um/m ² |
| Welding Core Cell | Well Shape | OEM Service | Support |
| Screw Holes | M6、 25x25mm | | |

► Name Rule



► Specifications

| Model | Platform Size (mm) | Thickness (mm) |
|------------|----------------------|------------------|
| HMBB0606 | 600x600 | 50/80/100 |
| HMBB075075 | 750x750 | |
| HMBB0906 | 900x600 | |
| HMBB1007 | 1000x700 | |
| HMBB1008 | 1000x800 | |
| HMBB1208 | 1200x800 | 100/150/200 |
| HMBB1509 | 1500x900 | |
| HMBB1510 | 1500x1000 | |
| HMBB1512 | 1500x1200 | |
| HMBB1609 | 1600x900 | |
| HMBB1812 | 1800x1200 | 100/150/200 |
| HMBB1815 | 1800x1500 | |
| HMBB2010 | 2000x1000 | |
| HMBB2012 | 2000x1200 | |
| HMBB2015 | 2000x1500 | |

*thickness in red are for options.



HPBC Series Aluminum Alloy Breadboard

▶ Guide

OMTOOLS HPBC series breadboard are widely used in optical experiments, life science, precision instrument measurement, aerospace experiments etc. With 430 stainless steel on top and bottom, 4mm thick well shape core cell making the top of breadboard supper rigid, clean, and stainless, also minimize the sources of vibrations and reinforce the structural damping. The breadboard is all steel structure which ensuring the long term thermal stability.

Also there are 5 counterbores on bottom of the breadboards of length more than 300mm, 4 counterbores in each corner and the other one in the center of the breadboard which could be mounted with ground mats to reduce the deviation of the breadboard.

▶ Features

| | |
|------------------|------------------------|
| Thickness (mm) | 13/20 |
| Material | 6061-T6 aluminum alloy |
| Surface Process | black anodic oxidation |
| Screw Holes | M6、25 × 25mm |

▶ Name Rule



▶ Specifications

| Model | Platform Size (mm) | Thickness (mm) |
|------------|----------------------|------------------|
| HPBC015010 | 150x100 | 13 |
| HPBC015015 | 150x150 | |
| HPBC03015 | 300x150 | |
| HPBC0202 | 200x200 | |
| HPBC0303 | 300x300 | |
| HPBC04503 | 450x300 | |
| HPBC0603 | 600x300 | |
| HPBC06045 | 600x450 | 13/20 |
| HPBC0606 | 600x600 | |
| HPBC0906 | 900x600 | |

* support customized dimensions.



■ HGZT Series Damping Optical Table

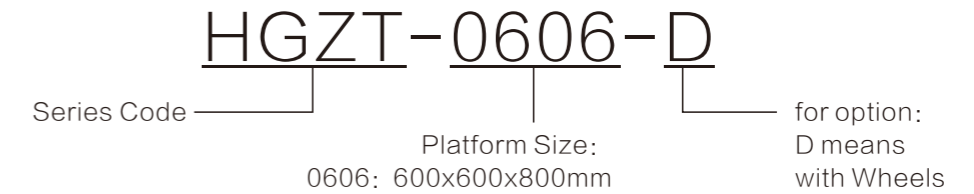
▶ Guide

OMTOOLS HGZT series optical table provide excellent rigidity and damping, effectively reducing the relative motion over a wide frequency range which is widely used in optical & photonics experiments, optic fiber industry, laser manufacturing & measurement, precision measurement applications. The table adopted stainless magnetic steel, which is light weight, rigid, damping and high levelness. The surface is grinded and matte, it is really a good choice as a perfect optical table.

▶ Features

| | | | |
|----------------------|-----------------------|-------------------------|------------|
| Vibration Isolator | Damping Rubber | Surface | Matte |
| Adjustment Direction | Horizontal Adjustment | Frequency | 7Hz ~ 16Hz |
| Total Height (mm) | 800 | Adjustment Method | Manual |
| Surface Plane | 0.1mm/600X600mm | Adjustment Range (mm) | ± 10 |
| Surface Roughness | ≤3.2um | | |

▶ Name Rule



▶ Specifications

| Model | Dimensions (LxWxH) (mm) | Load (kg) | Q'TY of Supports | Support(LxW) (mm) |
|----------|---------------------------|-------------|------------------|---------------------|
| HGZT0606 | 600x600x800 | <750 | 4 | 120x120 |
| HGZT0906 | 900x600x800 | <720 | | |
| HGZT1008 | 1000x800x800 | <700 | | |
| HGZT1208 | 1200x800x800 | <670 | | |
| HGZT1509 | 1500x900x800 | <1300 | | |
| HGZT1510 | 1500x1000x800 | <1250 | | 200x200 |
| HGZT1512 | 1500x1200x800 | <1250 | | |
| HGZT1609 | 1600x900x800 | <1300 | | |
| HGZT1812 | 1800x1200x800 | <1200 | | |
| HGZT1815 | 1800x1500x800 | <1135 | | |
| HGZT2010 | 2000x1000x800 | <1230 | | |
| HGZT2012 | 2000x1200x800 | <1176 | | |
| HGZT2412 | 2400x1200x800 | <1112 | | |
| HGZT2415 | 2400x1500x800 | <1014 | | |
| HGZT3010 | 3000x1000x800 | <1095 | | |
| HGZT3012 | 3000x1200x800 | <1014 | | |

| Model | Dimensions (LxWxH) (mm) | Load (kg) | Q' TY of Supports | Support(LxW) (mm) |
|----------|-------------------------|-----------|-------------------|-------------------|
| HGZT3015 | 3000x1500x800 | <1650 | 6 | 200x200 |
| HGZT3512 | 3500x1200x800 | <1700 | | |
| HGZT3515 | 3500x1500x800 | <1683 | | |
| HGZT4015 | 4000x1500x800 | <1542 | | |
| HGZT4215 | 4200x1500x800 | <2150 | 8 | |
| HGZT4815 | 4800x1500x800 | <2028 | | |
| HGZT5015 | 5000x1500x800 | <3488 | 12 | |
| HGZT6015 | 6000x1500x800 | <3285 | | |



■ HGZO Series Damping Optical Table

► Guide

HGZO series advanced damping vibration isolation optical table is special designed for experiments with high vibration isolation requirements, which is combined with precision damping rubber and tapered horizontal bearing, as well as 430 stainless steel on top of the table, it provides excellent rigidity and damping, effectively reducing the relative motion over a wide frequency range. This series optical table can be used in optic communication, electronic manufacturing, life science, optic & photonics experiments, laser interference, optical measurements and so on.

► Features

| | | | |
|----------------------------|----------------------------|-----------------------|------------|
| Vibration Isolation Method | Damping Rubber | Surface | Matte |
| Adjustment Method | tapered horizontal bearing | Frequency | 6Hz ~ 12Hz |
| Total Height (mm) | 800 | Adjustment Method | Manual |
| Surface Plane | 0.1mm/600X600mm | Adjustment Range (mm) | ± 10 |
| Surface Roughness | ≤3.2um | | |

► Name Rule



► Specifications

| Model | Dimensions (LxWxH) (mm) | Load (kg) | Thick (mm) | Q' TY of Support(PCS) | Support Size(LxW)mm | | | |
|----------|-------------------------|-----------|------------|-----------------------|---------------------|---------|---|---------|
| HGZO0606 | 600x600x800 | <750 | 100 | 4 | 120x120 | | | |
| HGZO0906 | 900x600x800 | <720 | | | | | | |
| HGZO1008 | 1000x800x800 | <700 | | | | | | |
| HGZO1208 | 1200x800x800 | <670 | | | | | | |
| HGZO1509 | 1500x900x800 | <1300 | 150 | | 4 | 200x200 | | |
| HGZO1510 | 1500x1000x800 | <1250 | | | | | | |
| HGZO1512 | 1500x1200x800 | <1250 | | | | | | |
| HGZO1609 | 1600x900x800 | <1300 | | | | | | |
| HGZO1812 | 1800x1200x800 | <1200 | 200 | | | | 4 | 200x200 |
| HGZO1815 | 1800x1500x800 | <1135 | | | | | | |
| HGZO2010 | 2000x1000x800 | <1230 | | | | | | |
| HGZO2012 | 2000x1200x800 | <1176 | | | | | | |
| HGZO2412 | 2400x1200x800 | <1112 | | | | | | |
| HGZO2415 | 2400x1500x800 | <1014 | | | | | | |
| HGZO3010 | 3000x1000x800 | <1095 | | | | | | |
| HGZO3012 | 3000x1200x800 | <1014 | | | | | | |

| Model | Dimensions (LxWxH) (mm) | Load (kg) | Thickness (mm) | Q' TY of Support(PCS) | Support Size(LxW)mm |
|----------|-------------------------|-----------|----------------|-----------------------|---------------------|
| HGZO3015 | 3000x1500x800 | <1650 | 300 | 6 | 200x200 |
| HGZO3512 | 3500x1200x800 | <1700 | | | |
| HGZO3515 | 3500x1500x800 | <1683 | | | |
| HGZO4015 | 4000x1500x800 | <1542 | | 8 | |
| HGZO4215 | 4200x1500x800 | <2150 | | | |
| HGZO4815 | 4800x1500x800 | <2028 | | | |
| HGZO5015 | 5000x1500x800 | <3488 | | 12 | |
| HGZO6015 | 6000x1500x800 | <3285 | | | |



■ HGZQ Series Air Vibration Isolation Table

▶ Guide

OMTOOLS HGZQ series is the advanced vibration isolation table series, which is special designed with 2 chambers (Air Chamber & Damping Chamber) to get the best performance of vibration isolation. HGZQ series is also support automatic adjustment in 6 degree of freedom. This series optical table can be used in optic communication, electronic manufacturing, life science, optic & photonics experiments, laser interference, optical measurements and so on.

▶ Features

| | | | |
|---------------------|-----------------|-------------------------|----------------------|
| Vibration Method | pneumatic | Amplitude | ≤0.7mm/s |
| Table Height (mm) | 800 | Rated Frequency | 2.5Hz ~ 3Hz |
| Table Flatness | 0.1mm/600X600mm | Adjustment Method | Automatic Adjustment |
| Table Roughness | ≤3.2um | Air Compressor | Silent <65Db |
| Surface | Matte | Adjustment Range (mm) | ± 10 |

▶ Name Rules

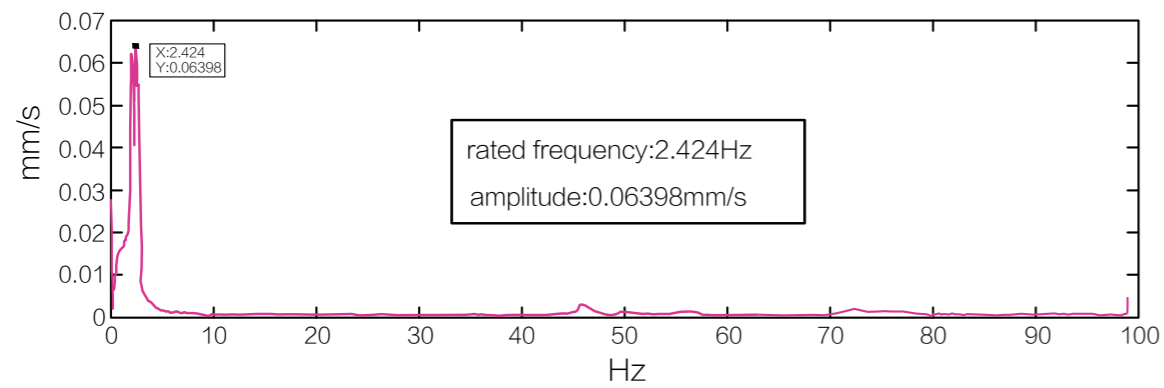
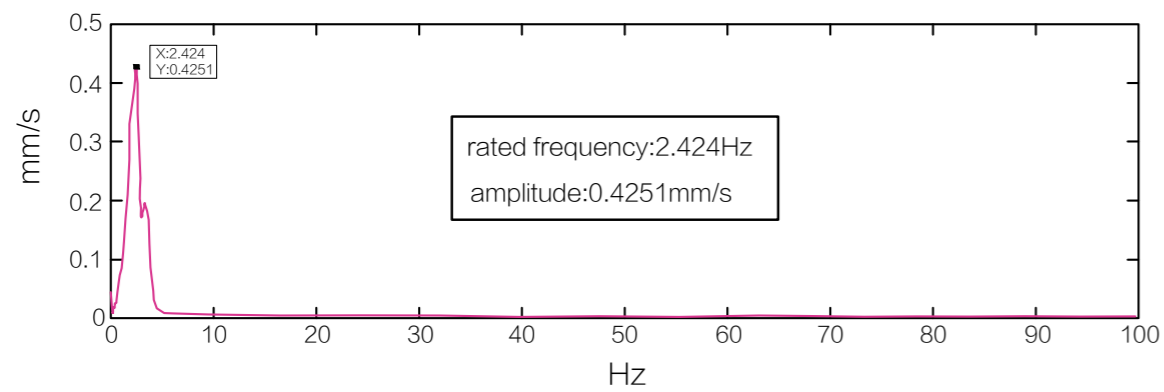
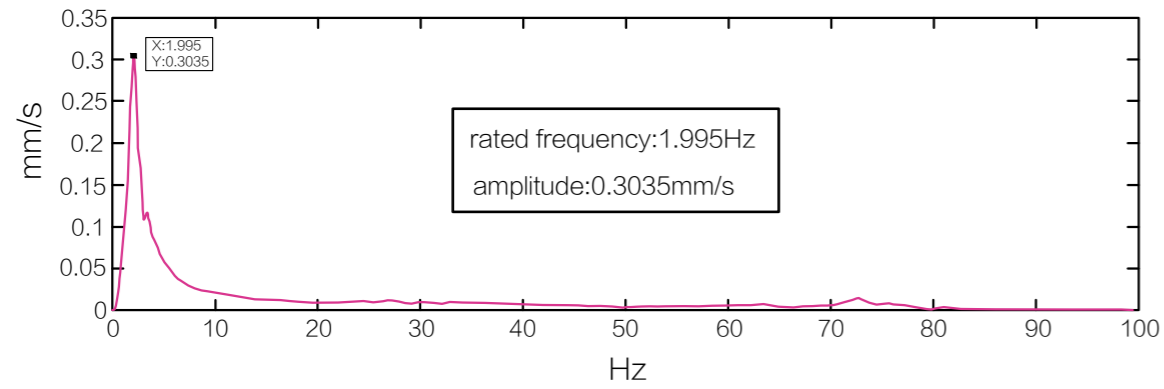


▶ Specifications

| Model | Dimensions(LxWxH) (mm) | Load (kg) | Table Top Weight (kg) | Q' TY of Support(PCS) | Support Size(LxW)mm | |
|----------|---------------------------|-------------|----------------------------|--------------------------|------------------------|---|
| HGZQ0606 | 600x600x800 | <350 | 54 | 4 | 120x120 | |
| HGZQ0906 | 900x600x800 | <320 | 81 | | | |
| HGZQ1008 | 1000x800x800 | <300 | 120 | | | |
| HGZQ1208 | 1200x800x800 | <270 | 144 | | | |
| HGZQ1509 | 1500x900x800 | <600 | 202 | | | |
| HGZQ1510 | 1500x1000x800 | <550 | 210 | | | |
| HGZQ1512 | 1500x1200x800 | <550 | 250 | | 200x200 | |
| HGZQ1609 | 1600x900x800 | <600 | 216 | | | |
| HGZQ1812 | 1800x1200x800 | <500 | 324 | | | |
| HGZQ1815 | 1800x1500x800 | <435 | 378 | | | |
| HGZQ2010 | 2000x1000x800 | <530 | 300 | | | |
| HGZQ2012 | 2000x1200x800 | <476 | 360 | | | |
| HGZQ2412 | 2400x1200x800 | <412 | 432 | 6 | | |
| HGZQ2415 | 2400x1500x800 | <314 | 540 | | | |
| HGZQ3010 | 3000x1000x800 | <395 | 480 | | | |
| HGZQ3012 | 3000x1200x800 | <314 | 576 | | | |
| HGZQ3015 | 3000x1500x800 | <600 | 720 | | | |
| HGZQ3512 | 3500x1200x800 | <650 | 672 | | | 8 |
| HGZQ3515 | 3500x1500x800 | <633 | 840 | | | |
| HGZQ4015 | 4000x1500x800 | <492 | 960 | | | |
| HGZQ4215 | 4200x1500x800 | <750 | 1008 | | | |
| HGZQ4815 | 4800x1500x800 | <628 | 1152 | | 12 | |
| HGZQ5015 | 5000x1500x800 | <1388 | 1200 | | | |
| HGZQ6015 | 6000x1500x800 | <1185 | 1440 | | | |

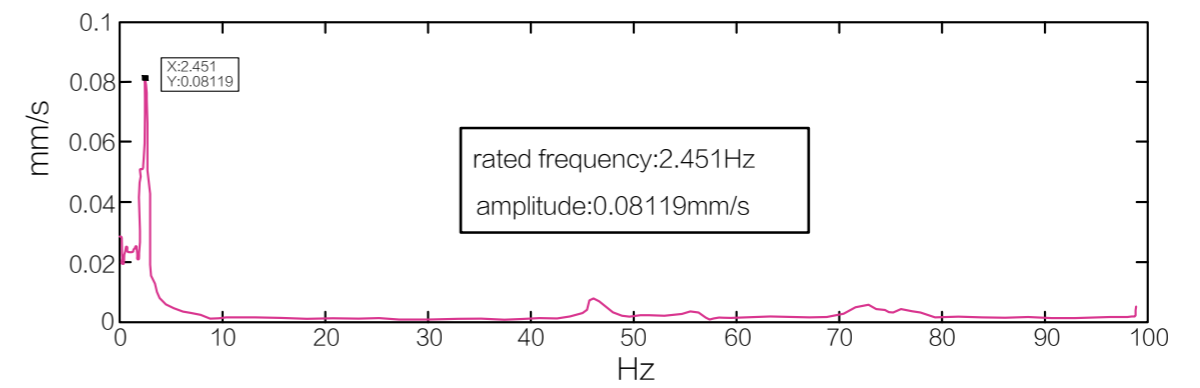
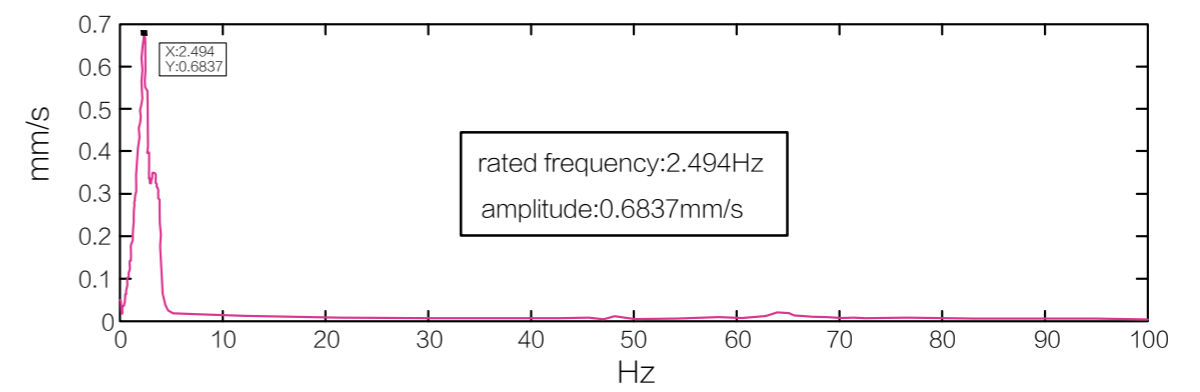
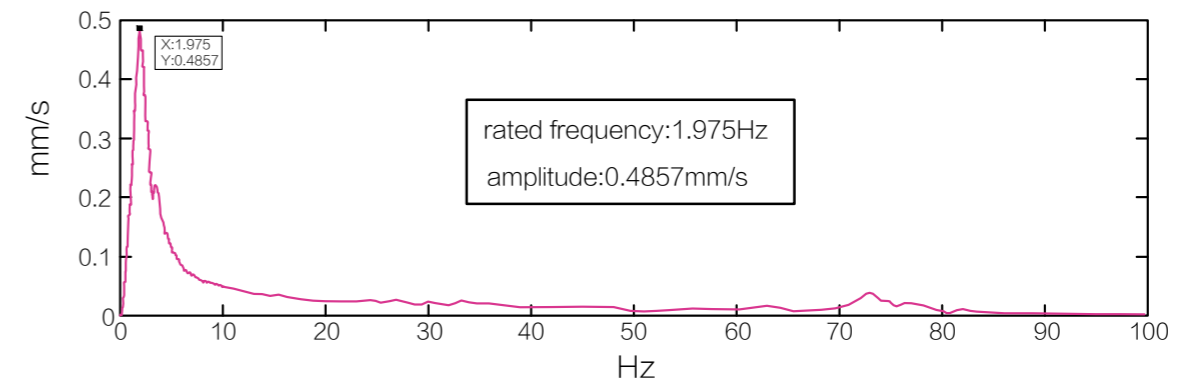
▶ Rated Frequency

Support (LxW): 120X120mm

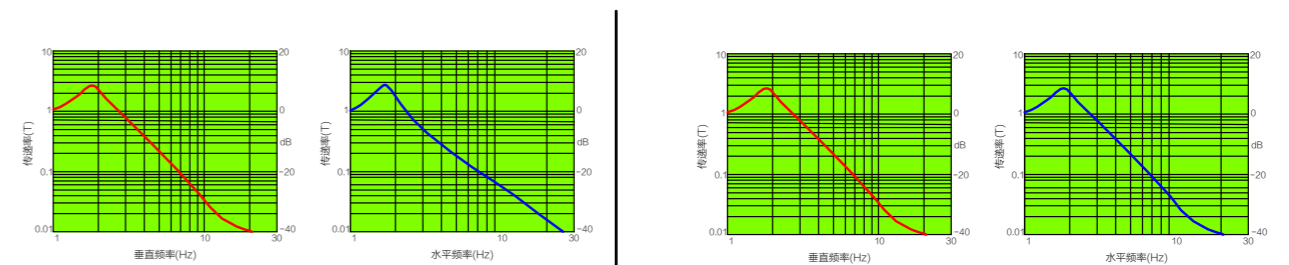


▶ Rated Frequency

Support (LxW): 120X120mm



▶ Efficiency





■ HGZK Series Scientific Grade Pneumatic Table

► Guide

Scientific Grade HGZK series is the high efficient vibration isolation optical table series. Adopted German super thin composite material as the air sac, and with the advance damping technology, which makes this series optical table more stable, silent, autoinflation and high efficient. HGZK series could be used in high precision optical&photonics experiment, microscope industry, life science, laser industry, optic fiber testing and so on.

► Features

| | | | |
|----------------------------|-------------------------------|--------------------------|-----------------------------|
| Vibration Isolation Method | air spring, damping rubber | Rated Frequency | 1.5Hz ~ 2.7Hz |
| Flatness | 0.1mm/600X600mm | Adjustment Method | automatic |
| Roughness | ≤3.2um | Air Compressor | silent compressor < 65Db |
| Surface | matte | Adjustment Range (mm) | ± 10 |

► Name Rule

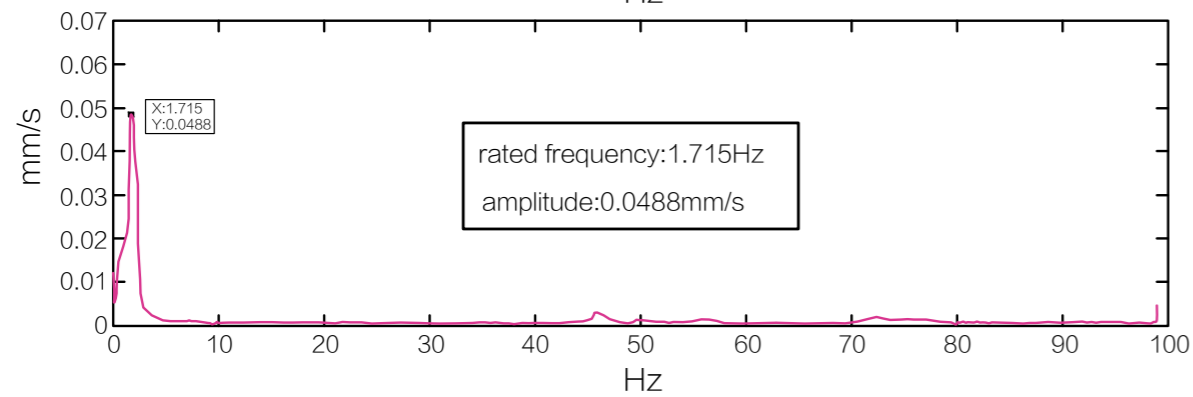
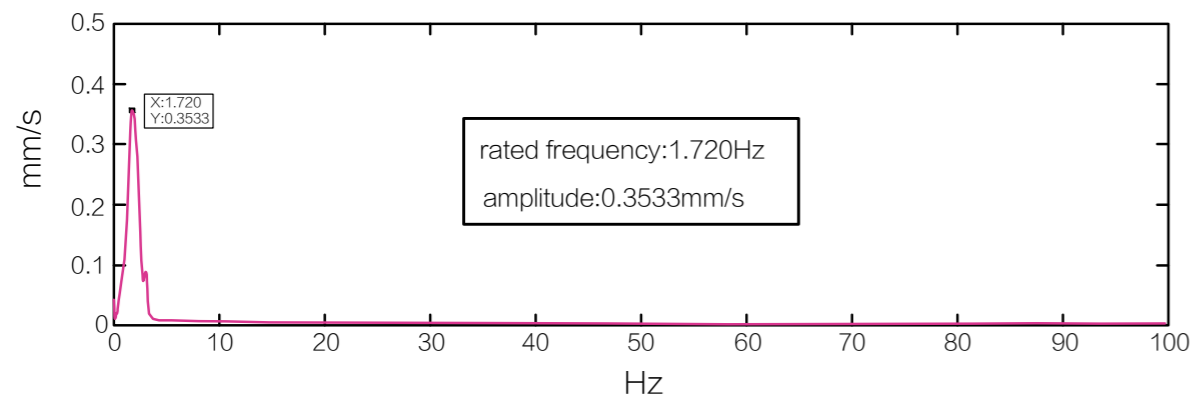
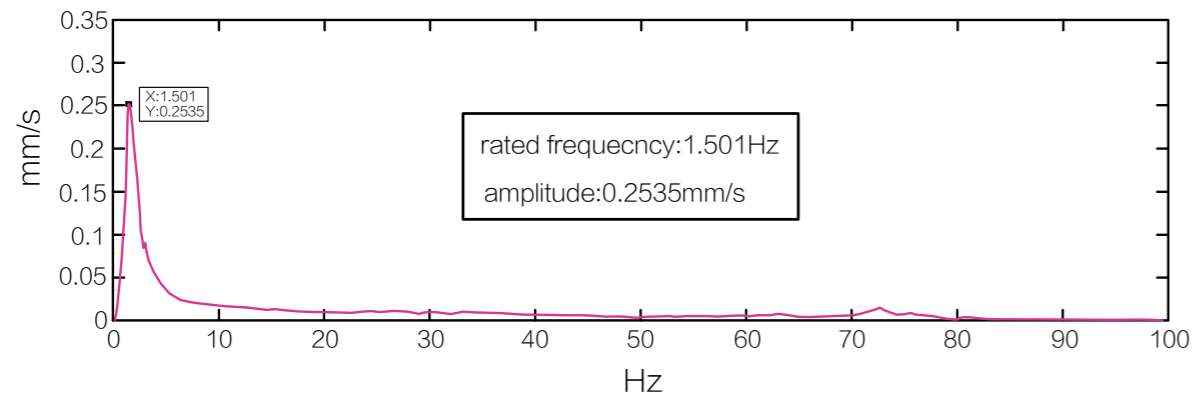


► Specifications

| Model | Dimensions (LxWxH) (mm) | Load (kg) | Thickness (mm) | Table Top Weight (kg) | Support's QTY (pcs) | Support's Size(LxW) (mm) | | |
|----------|-------------------------|-----------|----------------|-----------------------|---------------------|--------------------------|---------|---------|
| HGZK0606 | 600x600x800 | <350 | 100 | 54 | 4 | 120x120 | | |
| HGZK0906 | 900x600x800 | <320 | | 81 | | | | |
| HGZK1008 | 1000x800x800 | <300 | | 120 | | | | |
| HGZK1208 | 1200x800x800 | <270 | | 144 | | | | |
| HGZK1509 | 1500x900x800 | <600 | 150 | 202 | | 4 | 200x200 | |
| HGZK1510 | 1500x1000x800 | <550 | | 210 | | | | |
| HGZK1512 | 1500x1200x800 | <550 | | 250 | | | | |
| HGZK1609 | 1600x900x800 | <600 | | 216 | | | | |
| HGZK1812 | 1800x1200x800 | <500 | 200 | 324 | 4 | | | 200x200 |
| HGZK1815 | 1800x1500x800 | <435 | | 378 | | | | |
| HGZK2010 | 2000x1000x800 | <530 | | 300 | | | | |
| HGZK2012 | 2000x1200x800 | <476 | | 360 | | | | |
| HGZK2412 | 2400x1200x800 | <412 | | 432 | | | | |
| HGZK2415 | 2400x1500x800 | <314 | | 540 | | | | |
| HGZK3010 | 3000x1000x800 | <395 | | 480 | | | | |
| HGZK3012 | 3000x1200x800 | <314 | | 576 | | | | |
| HGZK3015 | 3000x1500x800 | <600 | 300 | 720 | | 6 | 200x200 | |
| HGZK3512 | 3500x1200x800 | <650 | | 672 | | | | |
| HGZK3515 | 3500x1500x800 | <633 | | 840 | | | | |
| HGZK4015 | 4000x1500x800 | <492 | | 960 | | | | |
| HGZK4215 | 4200x1500x800 | <750 | | 1008 | | | | |
| HGZK4815 | 4800x1500x800 | <628 | | 1152 | | | | |
| HGZK5015 | 5000x1500x800 | <1388 | | 1200 | | | | |
| HGZK6015 | 6000x1500x800 | <1185 | | 1440 | | | | |

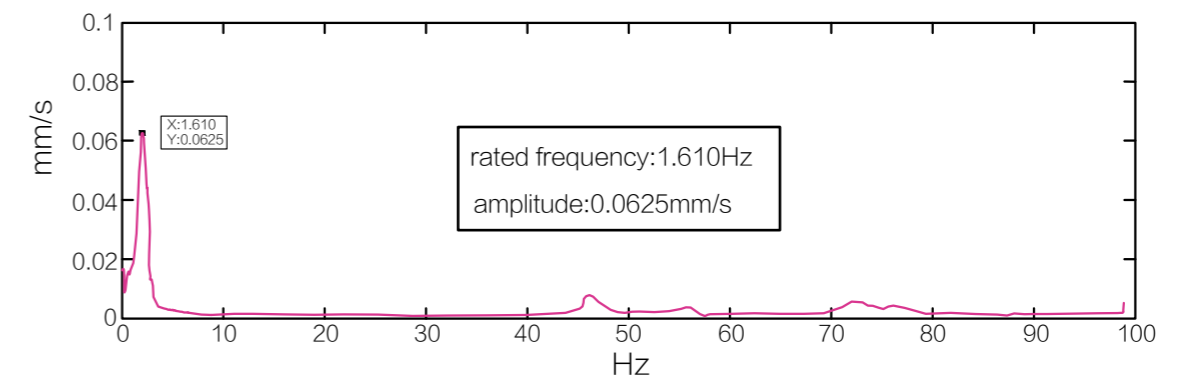
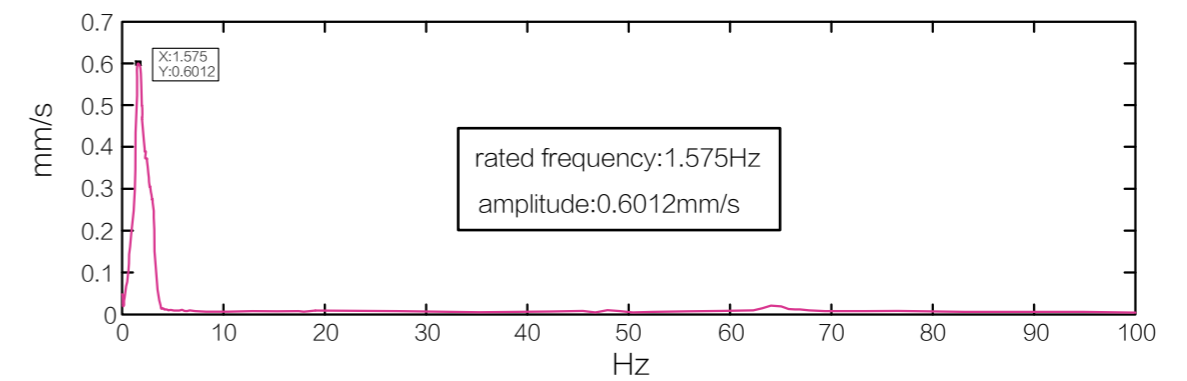
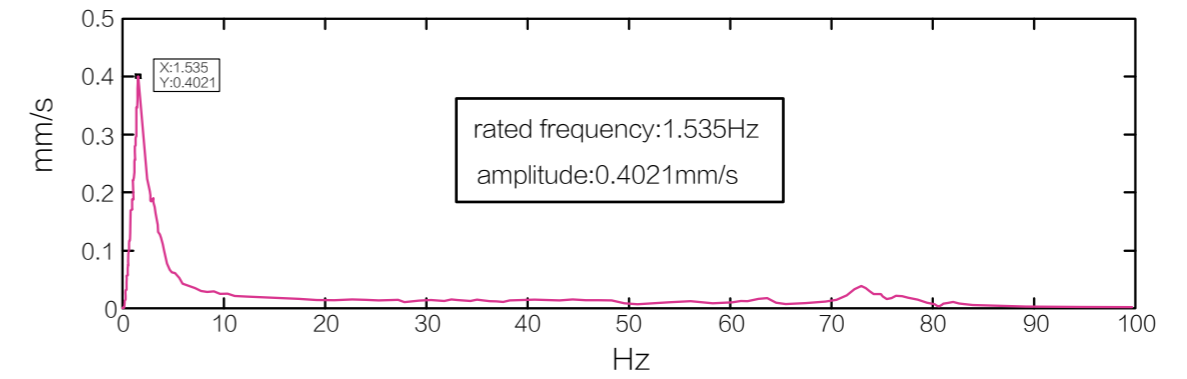
▶ Rated Frequency

Support's Size(LxW): 120X120mm

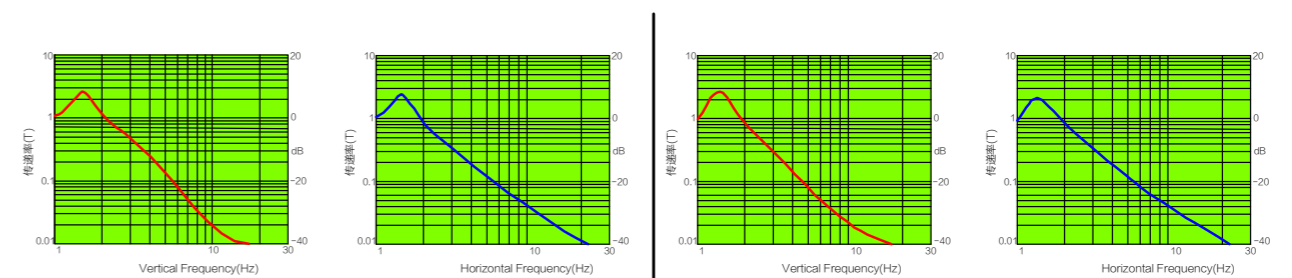


▶ Rated Frequency

Support's Size(LxW): 200X200mm



▶ vibration isolation efficiency





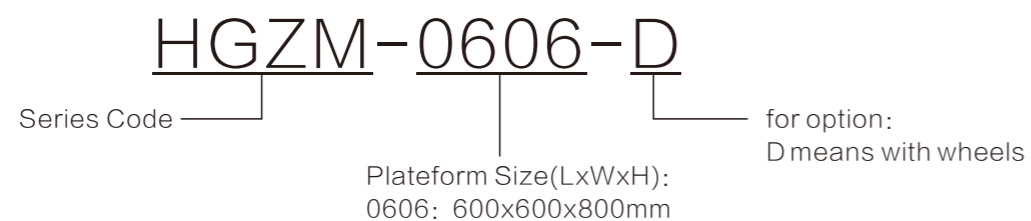
■ POM Nonmagnetic HGZM Series

► Guide

HGZM series adopted POM nonmagnetic table top, which is rigid, high strength, high wear resistance. Its mechanical properties are excellent, the specific strength can reach 50.5MPa, and the specific stiffness can reach 2650MPa, which is very close to metal. POM has good electrical insulation and is hardly affected by temperature and humidity; the dielectric loss changes little in a wide range of temperature, humidity and frequency; it has excellent arc resistance and can be maintained at high temperatures. Suitable for occasions with high requirements for magnetic fields.

Note: if it is in long-term use in temperature range of -40°C ~ 100°C , please avoid strong acid corrosion, avoid contact with high temperature, and it is easy to decompose at temperature of 280°C .

► Name Rule



► Specifications

| Model | Dimensions (LxWxH) (mm) | Load (kg) | Thickness (mm) | Support's Q' TY(pcs) | Support Size(LxW) (mm) |
|----------|-------------------------|-----------|----------------|----------------------|------------------------|
| HGZM0606 | 600x600x800 | < 90 | 100 | 4 | 120x120 |
| HGZM0906 | 900x600x800 | < 135 | | | |
| HGZM1008 | 1000x800x800 | < 200 | | | |
| HGZM1208 | 1200x800x800 | < 240 | | | |

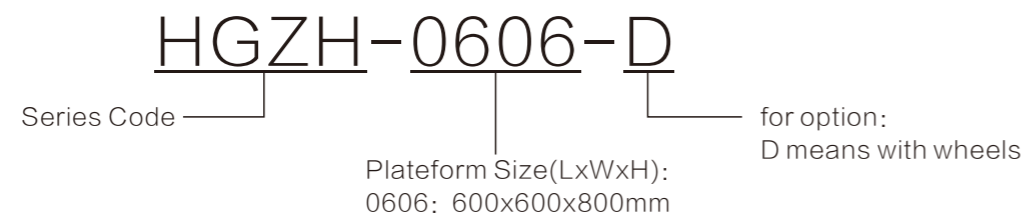


Stainless Steel Nonmagnetic HGZH Series

Guide

The stainless steel nonmagnetic HGZH series optical table adopted 304/316 stainless steel, if you need a specific level of nonmagnetic table, we will suggest our HGZM series POM nonmagnetic optical table, which has two types for option. We support only table top magnetic and also both table top and support legs nonmagnetic, just feel free to contact us on details.

Name Rule



Specifications

| Model | Size(LxWxH) (mm) | Load (kg) | Table Top Weight (kg) | Support's Q'TY(pcs) | Support's Size(LxW) (mm) |
|----------|------------------|-----------|-----------------------|---------------------|--------------------------|
| HGZH0606 | 600x600x800 | < 90 | 54 | 4 | 120x120 |
| HGZH0906 | 900x600x800 | < 135 | 81 | | |
| HGZH1008 | 1000x800x800 | < 200 | 120 | | |
| HGZH1208 | 1200x800x800 | < 240 | 144 | | |
| HGZH1509 | 1500x900x800 | < 338 | 202 | | |
| HGZH1510 | 1500x1000x800 | < 375 | 210 | | |
| HGZH1512 | 1500x1200x800 | < 390 | 250 | | 200x200 |
| HGZH1609 | 1600x900x800 | < 360 | 216 | | |
| HGZH1812 | 1800x1200x800 | < 540 | 324 | | |
| HGZH1815 | 1800x1500x800 | < 570 | 378 | | |
| HGZH2010 | 2000x1000x800 | < 500 | 300 | | |
| HGZH2012 | 2000x1200x800 | < 600 | 360 | | |
| HGZH2412 | 2400x1200x800 | < 720 | 432 | | |
| HGZH2415 | 2400x1500x800 | < 900 | 540 | | |
| HGZH3010 | 3000x1000x800 | < 750 | 480 | 6 | |
| HGZH3012 | 3000x1200x800 | < 900 | 576 | | |
| HGZH3015 | 3000x1500x800 | < 1125 | 720 | | |
| HGZH3512 | 3500x1200x800 | < 1050 | 672 | | |
| HGZH3515 | 3500x1500x800 | < 1310 | 840 | | |
| HGZH4015 | 4000x1500x800 | < 1500 | 960 | | 8 |
| HGZH4215 | 4200x1500x800 | < 1575 | 1008 | | |
| HGZH4815 | 4800x1500x800 | < 1800 | 1152 | | |
| HGZH5015 | 5000x1500x800 | < 1875 | 1200 | 12 | |
| HGZH6015 | 6000x1500x800 | < 2250 | 1440 | | |

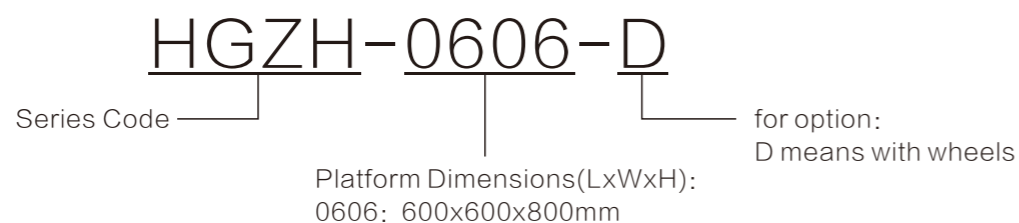


Marble Optical Table HGZD Series

Guide

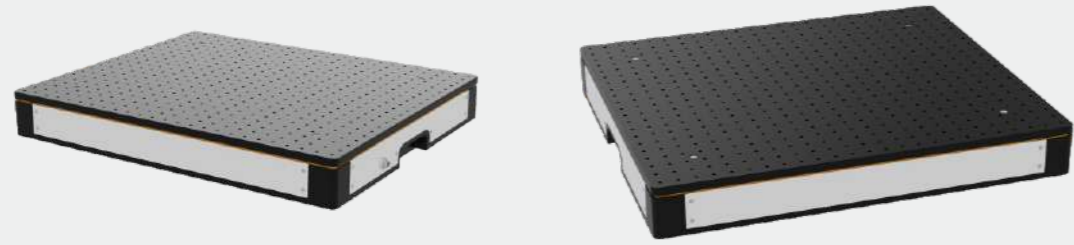
Marble optical table HGZD series adopted healthy pure marble to instead traditional steel structure table top, which is in high flatness, heavy, rigid, stable and with strong corrosion resistance, combined with precision damping rubber and horizontal adjustment bearing system, this series is in high performance of vibration isolation, and suits for experiments & production process which requires high flatness and stability.

Name Rule



Specifications

| Model | Dimensions (LxWxH) (mm) | Load (kg) | Table Top Weight (kg) | Support's Q' TY (pcs) | Support's Size(LxW) (mm) | |
|----------|-------------------------|-----------|-----------------------|-----------------------|--------------------------|---|
| HGZD0606 | 600x600x800 | < 1102 | 97 | 4 | 120x120 | |
| HGZD0906 | 900x600x800 | < 1054 | 145 | | | |
| HGZD1008 | 1000x800x800 | < 984 | 216 | | | |
| HGZD1208 | 1200x800x800 | < 940 | 259 | | | |
| HGZD1509 | 1500x900x800 | < 1853 | 546 | | | |
| HGZD1510 | 1500x1000x800 | < 1792 | 607 | | | |
| HGZD1512 | 1500x1200x800 | < 1671 | 729 | | 200x200 | |
| HGZD1609 | 1600x900x800 | < 1816 | 583 | | | |
| HGZD1812 | 1800x1200x800 | < 2433 | 1166 | | | |
| HGZD1815 | 1800x1500x800 | < 2142 | 1458 | | | |
| HGZD2010 | 2000x1000x800 | < 2520 | 1080 | | | |
| HGZD2012 | 2000x1200x800 | < 2304 | 1296 | | | |
| HGZD2412 | 2400x1200x800 | < 2044 | 1555 | 6 | 200x200 | |
| HGZD2415 | 2400x1500x800 | < 1656 | 1944 | | | |
| HGZD3010 | 3000x1000x800 | < 1920 | 1620 | | | |
| HGZD3012 | 3000x1200x800 | < 1656 | 1944 | | | |
| HGZD3015 | 3000x1500x800 | < 1755 | 3645 | | | |
| HGZD3512 | 3500x1200x800 | < 1998 | 3402 | | | 8 |
| HGZD3515 | 3500x1500x800 | < 1147 | 4250 | | | |
| HGZD4015 | 4000x1500x800 | < 540 | 4846 | | 12 | |
| HGZD4215 | 4200x1500x800 | < 2097 | 5103 | | | |
| HGZD4815 | 4800x1500x800 | < 1368 | 5832 | | | |
| HGZD5015 | 5000x1500x800 | < 4725 | 6075 | | | |
| HGZD6015 | 6000x1500x800 | < 3510 | 7290 | | | |



Mini Size Table Top HGZJ Series

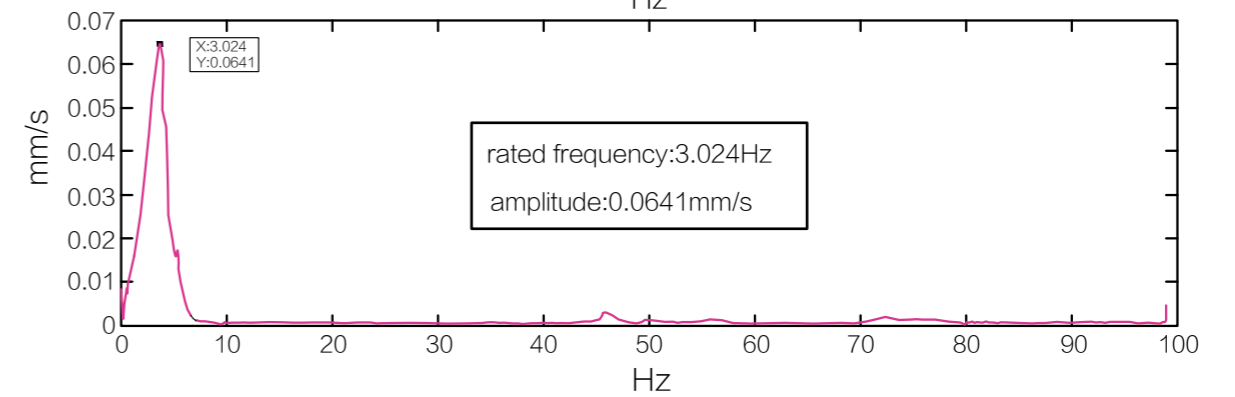
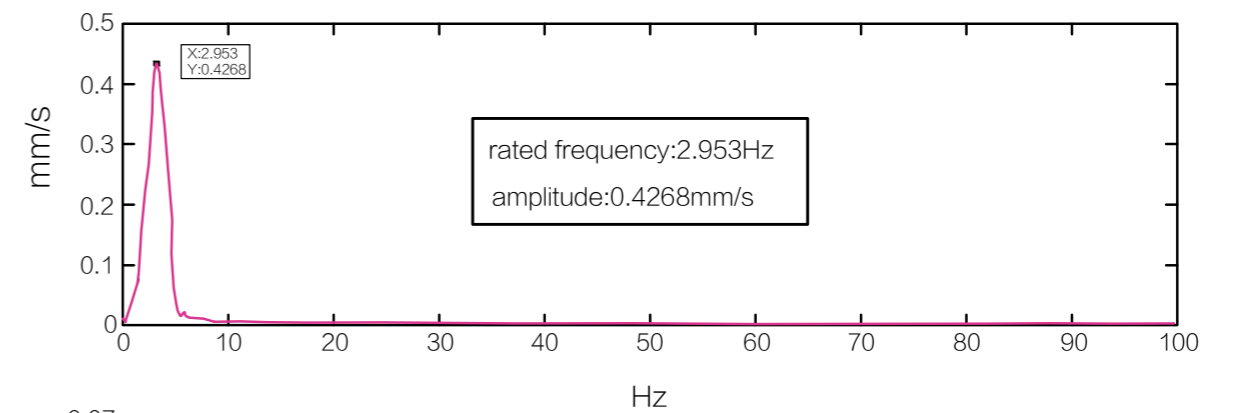
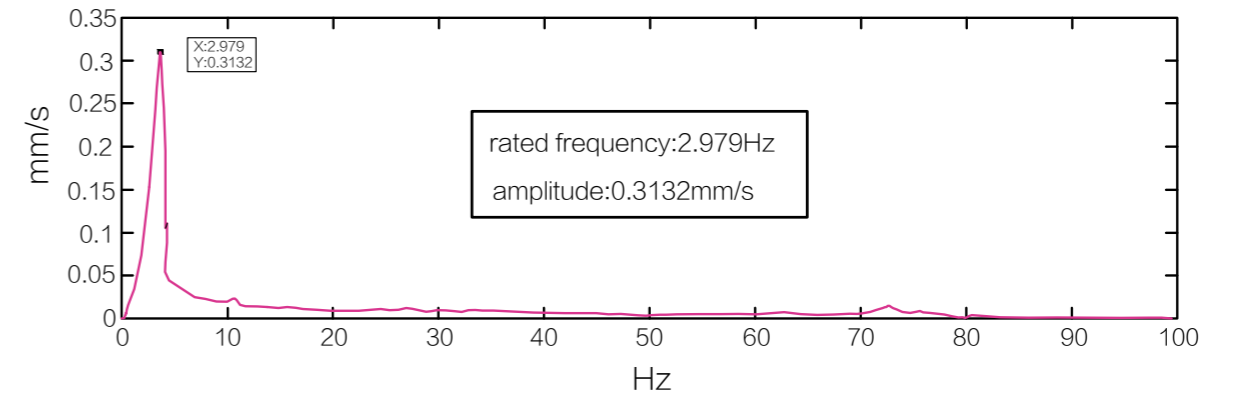
Guide

HGZJ series is auto-inflation table top, which is in mini size, thin, and very easy to install. The vibration isolation adopted thin-film high-performance air spring which can effectively eliminate vibration interference, the natural frequency can reach 2.5Hz, and the highest vibration isolation efficiency can reach more than 90%. The high-rigidity mounting surface makes the mounted instrument more stable, and it is equipped with three height-adjusting valves, which can automatically adjust the level. It is mainly used in laser test systems such as hardness testers, length measuring instruments, roundness meters, slicers, small probe stations, laser microscopes, confocal microscopes, micro-operating systems and debris clamps and other operations.

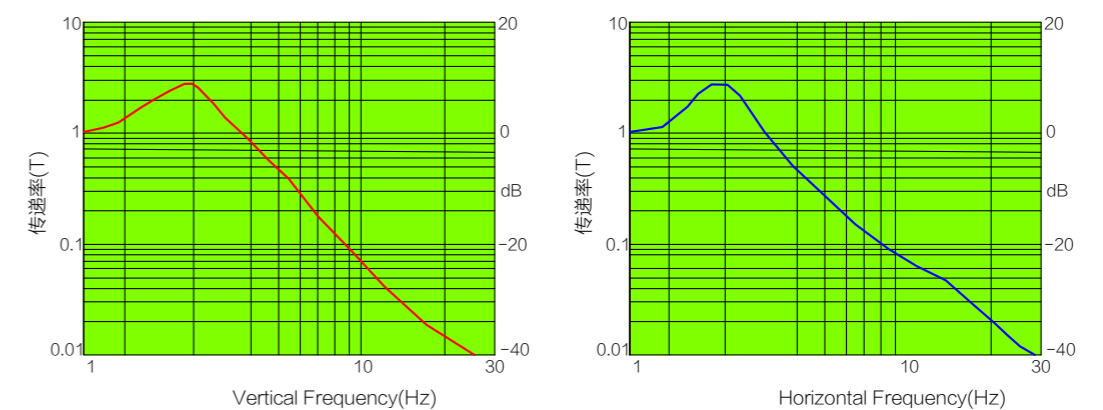
Specifications

| Model | HGZJ0605 | HGZJ0806 |
|--------------------------------|---|------------------------|
| Top Material | advance aluminum alloy | |
| Flatness | ≤0.1mm/600x600mm | |
| Surface | matte | |
| Rated Frequency | 2.5Hz~3.2Hz | |
| Vibration Isolation Efficiency | Horizontal Frequency 5Hz : 80% , 10Hz :90% Vertical Frequency 5Hz: 80% , 10Hz: 90% | |
| Vibration Isolation Method | duplex air spring | |
| Load | 180KG | |
| Table Top Dimensions | 630x530x60mm | 830x630x60mm |
| Suggest Load Size(LxW) | smaller than 600x500mm | smaller than 800x600mm |

Rated Frequency



Efficiency





Pneumatic Vibration Isolator HGZV Series

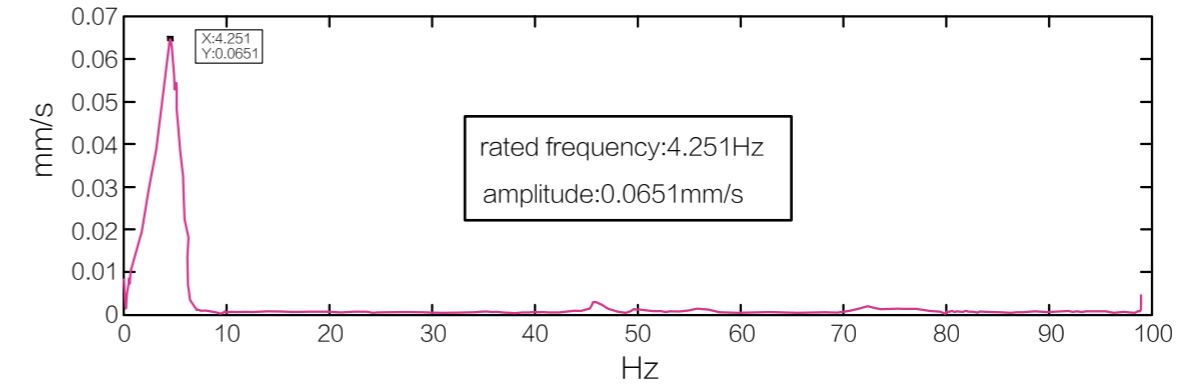
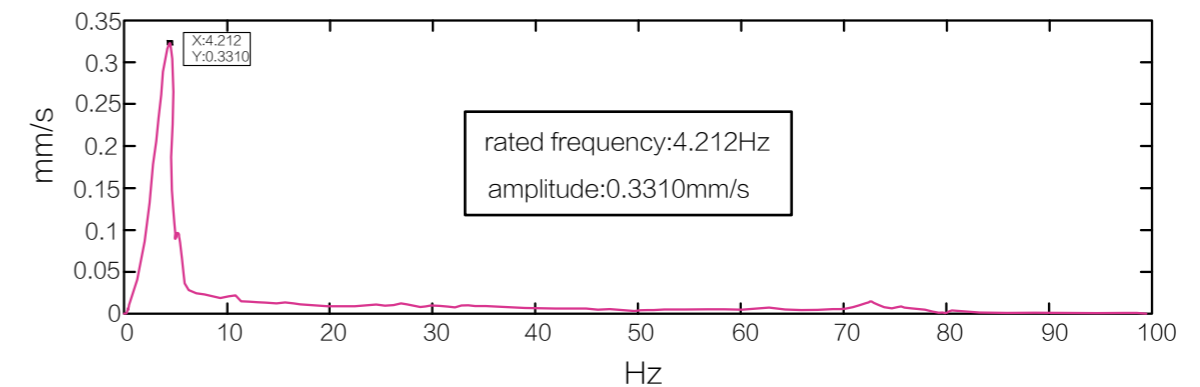
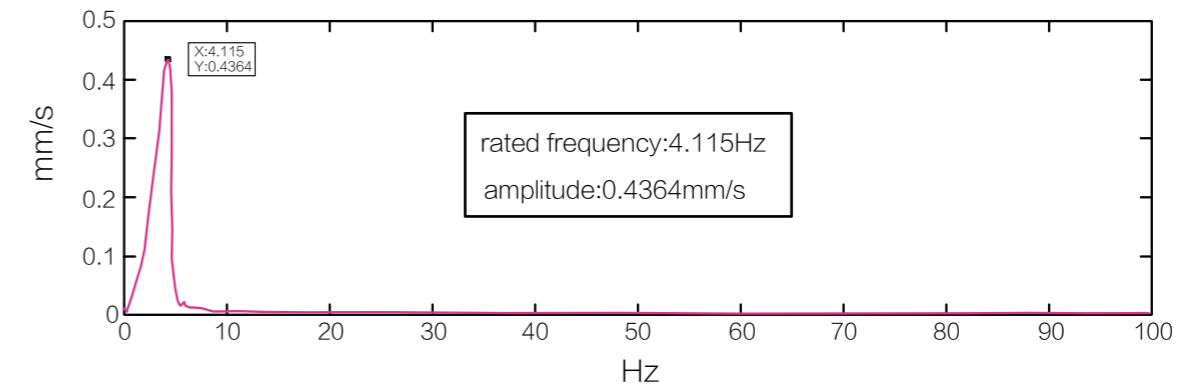
► Guide

HGZV series can directly carry high-precision processing equipment, and can be embedded in the equipment to absorb high-frequency vibration, variable damping, and quickly suppress disturbance. At the same time, it has the characteristics of large static bearing capacity, low natural frequency, small loss, fast dynamic response, simple and fast installation, etc. Mainly suitable for high-precision and ultra-high-precision processing equipment (ultra-precision diamond lathe, ultra-precision grinding machine, etc.), ultra-precision measuring equipment (AFM, scanning electron microscope, profiler, etc.)

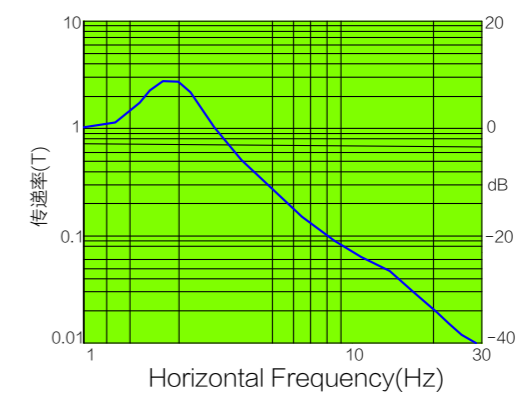
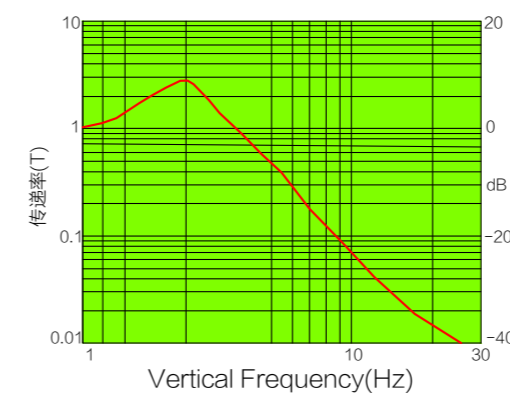
► Specifications

| Model | Dimensions (LxWxH) (mm) | Weight (KG) | Load (KG) /unit | Mounting Holes | Pitch-row (mm) |
|-------------------------|-------------------------|-------------|-----------------|----------------|----------------|
| HGZV165 | 165X165X70 | 10 | 140 | ∅ 13x4 | 145 |
| HGZV200 | 200X200X70 | 15 | 450 | | 175 |
| HGZV260 | 260X260X70 | 23 | 800 | | 230 |
| HGZV350 | 350X350X70 | 42 | 1800 | | 320 |
| HGZV400 | 400X400X70 | 53 | 2400 | | 370 |
| Rated Frequency ≤ 4.5Hz | | | | | |
| Adjustment Range 5~20mm | | | | | |

► Rated Frequency



► Efficiency





■ Pneumatic Vibration Isolator HGZG Series

▶ Guide

HGZG series adopted the extremely durable air bag type air spring, which has a long service life, light weight, short stabilization time after excited vibration, fast response speed, high repeatable level positioning accuracy, and is equipped with a precision level height adjustment valve. Large bearing capacity, low natural frequency, low loss, fast dynamic response, easy and fast installation. The isolator can save the horizontal adjustment information and automatically adjust the horizontal for the second use. Generally 4 (or more) are used together as a set.

▶ Specifications

| Model | Dimensions (LxWxH)(mm) | Install Size (LxW)(mm) | Install Hole Diameter(mm) | Rated Frequency | Weight (KG) | Load (KG) |
|----------|------------------------|------------------------|---------------------------|-----------------|-------------|-----------|
| HGZG110A | 112X158.5X102 | 75X75 | 6.6 | 3Hz~5Hz | 2.0 | 150-250 |



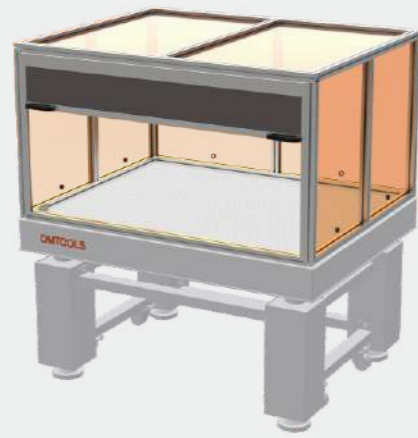
■ Pneumatic Vibration Isolator HGZC Series

▶ Guide

OMTOOLS HGZC series uses a highly durable air bag type air spring, which has a long service life and is light in weight, it adopts a double-layer air chamber design and is equipped with a precision level height adjustment valve. Stable vibration reduction, adjustable damping rigidity of the shock absorber, short stabilization time after excited vibration, fast response speed, high repeatable level positioning accuracy. Large bearing capacity, low natural frequency, low loss, fast dynamic response, easy and fast installation. The isolator can save the horizontal adjustment information and automatically adjust the horizontal for the second use. Generally, 4 (or more) are used together as a set.

▶ Specifications

| Model | Dimensions (LxWxH)(mm) | Install Size (LxW)(mm) | Install Hole (mm) | Rated Frequency | Weight (KG) | Load (KG) |
|----------|------------------------|------------------------|-------------------|-----------------|-------------|-----------|
| HGZC130A | 130X202.5X114 | 108X108 | 7 | 3Hz~5Hz | 4.1 | 250-350 |

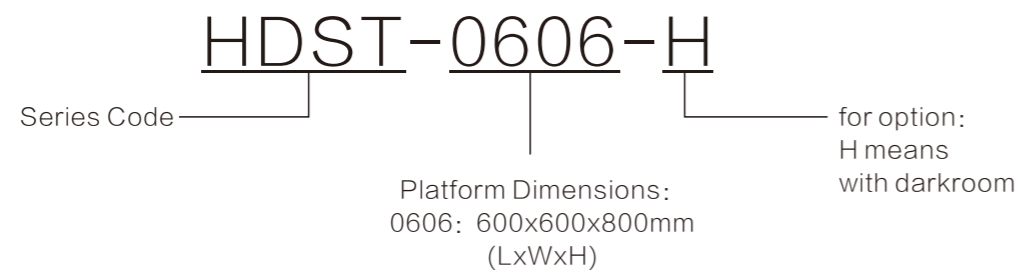


Faraday Optical Platform HDST Series

Guide

The HDST series of optical platform, also known as Faraday cages, are designed for medical and biological science laboratories and can be customized. The frame of this series of products is directly installed on the top plate of the optical table, which can effectively isolate the interference of airflow, dust, sound, magnetic field, etc. on the experiment. The main frame is made of aluminum profile frame, transparent or dark brown color side panels and top panels. All platform can realize the function of electro-physiological.

Name Rule



Specifications

| Model | Dimensions (LxWxH) (mm) | Load (kg) | Support's Q' TY(pcs) | Support's Size (LxW) (mm) | Cage Internal Height (mm) |
|----------|-------------------------|-----------|----------------------|---------------------------|---------------------------|
| HDST0606 | 600x600x800 | < 80 | 4 | 120x120 | 800 |
| HDST0906 | 900x600x800 | < 135 | | | |
| HDST1008 | 1000x800x800 | < 200 | | 200x200 | |
| HDST1208 | 1200x800x800 | < 240 | | | |
| HDST1509 | 1500x900x800 | < 338 | | | |



Optical Shelves and Darkroom HYQJ Series

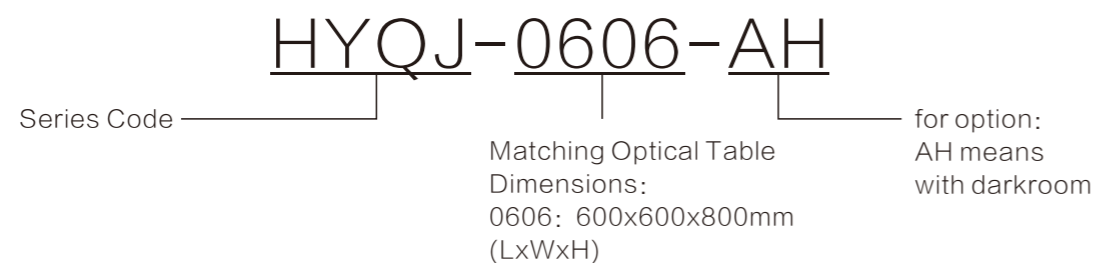
► Guide

The optical shelves is a normally used platform for accessories, which is multi-function and does not affect the vibration resistance of the platform, and also provides experimental conditions such as power supply.

The standard optical shelves HYQJ-A series is welded by square steel pipes, the surface is black, electrostatic spraying, corrosion-resistant and wear-resistant, and the load is 150kg, and with load of 100kg, and with wheels could be moved freely.

Equipped with leakage protectors and multiple power sockets, equipped with steel plates, and the storage space is 660mm high.

► Name Rule



► Specifications

| Model | Matching Optical Table Dimensions (LxWxH) (mm) | Note |
|-------------|--|-------------|
| HYQJ0606A | 600x600x800 | With Wheels |
| HYQJ075075A | 750x750x800 | |
| HYQJ0906A | 900x600x800 | |
| HYQJ1007A | 1000x700x800 | |
| HYQJ1008A | 1000x800x800 | |
| HYQJ1208A | 1200x800x800 | |
| HYQJ1509A | 1500x900x800 | |
| HYQJ1510A | 1500x1000x800 | |
| HYQJ1512A | 1500x1200x800 | |
| HYQJ1609A | 1600x900x800 | |
| HYQJ1812A | 1800x1200x800 | |
| HYQJ1815A | 1800x1500x800 | |
| HYQJ2010A | 2000x1000x800 | |
| HYQJ2012A | 2000x1200x800 | |
| HYQJ2412A | 2400x1200x800 | |
| HYQJ3010A | 3000x1000x800 | |
| HYQJ3012A | 3000x1200x800 | |
| HYQJ3015A | 3000x1500x800 | |
| HYQJ3512A | 3500x1200x800 | |
| HYQJ3515A | 3500x1500x800 | |
| HYQJ4015A | 4000x1500x800 | |
| HYQJ4215A | 4200x1500x800 | |
| HYQJ4815A | 4800x1500x800 | |
| HYQJ5015A | 5000x1500x800 | |
| HYQJ6015A | 6000x1500x800 | |



Optical Table Top Shelves and Darkroom HYQJ-B Series

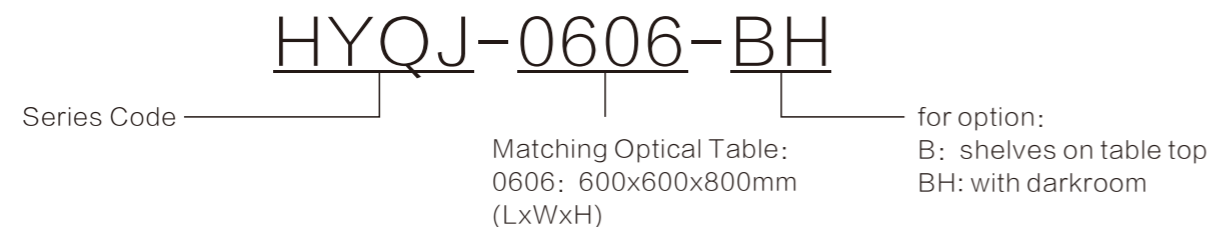
Guide

HYQJ-B series is the shelves on top of the optical table, which is used to place various instruments and lab equipments to save space, and does not affect the vibration resistance of the platform, and also provides experimental conditions such as power supply.

The standard optical platform instrument rack HYQJ-B series frame is welded by square steel pipes, the surface is black, electrostatic spraying, corrosion-resistant and wear-resistant, and the load is 100kg.

Equipped with leakage protectors and multiple power sockets, equipped with steel plates, and the storage height is 660mm.

Name Rule



Specifications

| Model | Matching Optical Table Dimensions(LxWxH) (mm) |
|-------------|---|
| HYQJ0606B | 600x600x800 |
| HYQJ075075B | 750x750x800 |
| HYQJ0906B | 900x600x800 |
| HYQJ1007B | 1000x700x800 |
| HYQJ1008B | 1000x800x800 |
| HYQJ1208B | 1200x800x800 |
| HYQJ1509B | 1500x900x800 |
| HYQJ1510B | 1500x1000x800 |
| HYQJ1512B | 1500x1200x800 |
| HYQJ1609B | 1600x900x800 |
| HYQJ1812B | 1800x1200x800 |
| HYQJ1815B | 1800x1500x800 |
| HYQJ2010B | 2000x1000x800 |

| Model | Matching Optical Table Dimensions(LxWxH) (mm) |
|-----------|---|
| HYQJ2012B | 2000x1200x800 |
| HYQJ2412B | 2400x1200x800 |
| HYQJ3010B | 3000x1000x800 |
| HYQJ3012B | 3000x1200x800 |
| HYQJ3015B | 3000x1500x800 |
| HYQJ3512B | 3500x1200x800 |
| HYQJ3515B | 3500x1500x800 |
| HYQJ4015B | 4000x1500x800 |
| HYQJ4215B | 4200x1500x800 |
| HYQJ4815B | 4800x1500x800 |
| HYQJ5015B | 5000x1500x800 |
| HYQJ6015B | 6000x1500x800 |



Bistratal Landing Shelves and Darkroom HYQJ-C Series

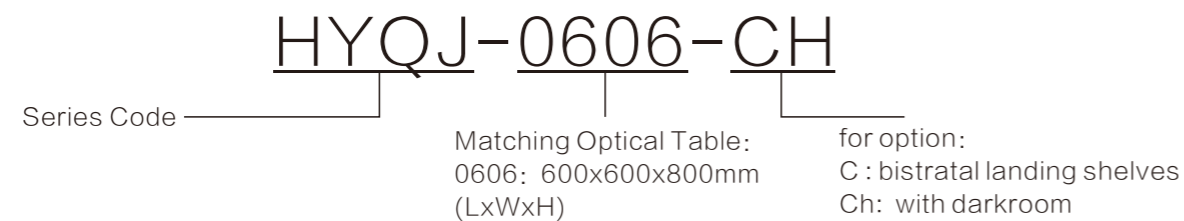
► Guide

HYQJ-C bistratal landing shelves with wheels, which is used to place various instruments and lab equipments to save space, and does not affect the vibration resistance of the platform, and also provides experimental conditions such as power supply.

The standard optical platform instrument rack HYQJ-B series frame is welded by square steel pipes, the surface is black, electrostatic spraying, corrosion-resistant and wear-resistant, and with load of 150kg, and with wheels could be moved freely.

Equipped with leakage protectors and multiple power sockets, equipped with steel plates, and the storage height is 660mm.

► Name Rule



► Specifications

| Model | Matching Optical Table (LxWxH) (mm) | Note |
|-------------|-------------------------------------|-------------|
| HYQJ0606C | 600x600x800 | With Wheels |
| HYQJ075075C | 750x750x800 | |
| HYQJ0906C | 900x600x800 | |
| HYQJ1007C | 1000x700x800 | |
| HYQJ1008C | 1000x800x800 | |
| HYQJ1208C | 1200x800x800 | |
| HYQJ1509C | 1500x900x800 | |
| HYQJ1510C | 1500x1000x800 | |
| HYQJ1512C | 1500x1200x800 | |
| HYQJ1609C | 1600x900x800 | |
| HYQJ1812C | 1800x1200x800 | |
| HYQJ1815C | 1800x1500x800 | |
| HYQJ2010C | 2000x1000x800 | |
| HYQJ2012C | 2000x1200x800 | |
| HYQJ2412C | 2400x1200x800 | |
| HYQJ3010C | 3000x1000x800 | |
| HYQJ3012C | 3000x1200x800 | |
| HYQJ3015C | 3000x1500x800 | |
| HYQJ3512C | 3500x1200x800 | |
| HYQJ3515C | 3500x1500x800 | |
| HYQJ4015C | 4000x1500x800 | |
| HYQJ4215C | 4200x1500x800 | |
| HYQJ4815C | 4800x1500x800 | |
| HYQJ5015C | 5000x1500x800 | |
| HYQJ6015C | 6000x1500x800 | |



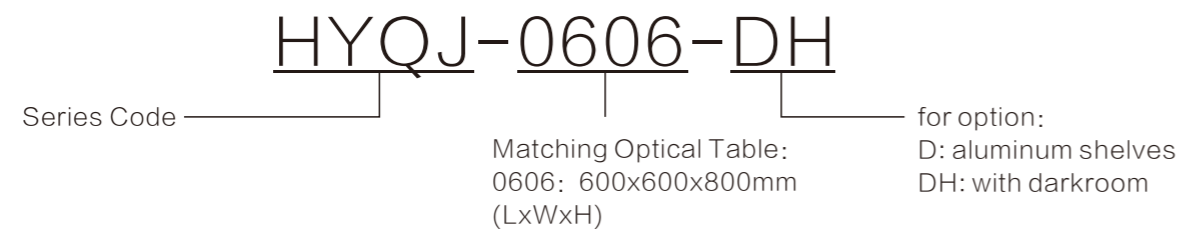
Aluminum Optical Table Shelves and darkroom HYQJ-D Series

Guide

HYQJ-D series optical table landing shelves is made of aluminum type metal, which is used to place various instruments and lab equipments to save space, and does not affect the vibration resistance of the platform, and also provides experimental conditions such as power supply. The surface is naturally oxidized, corrosion-resistant and wear-resistant, easy to install, and with load of 100kg, and with wheels could be moved freely.

Equipped with leakage protectors and multiple power sockets, equipped with steel plates, and the storage height is 660mm.

Name Rule



Specifications

| Model | Matching Optical Table (LxWxH) (mm) | Model | Matching Optical Table (LxWxH) (mm) |
|-------------|-------------------------------------|-----------|-------------------------------------|
| HYQJ0606D | 600x600x800 | HYQJ2012D | 2000x1200x800 |
| HYQJ075075D | 750x750x800 | HYQJ2412D | 2400x1200x800 |
| HYQJ0906D | 900x600x800 | HYQJ3010D | 3000x1000x800 |
| HYQJ1007D | 1000x700x800 | HYQJ3012D | 3000x1200x800 |
| HYQJ1008D | 1000x800x800 | HYQJ3015D | 3000x1500x800 |
| HYQJ1208D | 1200x800x800 | HYQJ3512D | 3500x1200x800 |
| HYQJ1509D | 1500x900x800 | HYQJ3515D | 3500x1500x800 |
| HYQJ1510D | 1500x1000x800 | HYQJ4015D | 4000x1500x800 |
| HYQJ1512D | 1500x1200x800 | HYQJ4215D | 4200x1500x800 |
| HYQJ1609D | 1600x900x800 | HYQJ4815D | 4800x1500x800 |
| HYQJ1812D | 1800x1200x800 | HYQJ5015D | 5000x1500x800 |
| HYQJ1815D | 1800x1500x800 | HYQJ6015D | 6000x1500x800 |
| HYQJ2010D | 2000x1000x800 | | |



Desktop Active Automatic Vibration Isolation System

Guide

The desktop active vibration isolation system consists of two parts, the shock absorber and the controller. The shock absorber adopts precision metal springs to achieve passive vibration isolation, and the voice coil motor to achieve active vibration reduction. The speed sensor used for feedback control detection which adopts the product of GEOSPACE in the US, and all parts and components are enclosed in the body.

The system does not need compressed air during operation, and it is easy to install and plug and play. It can automatically adjust the foundation vibration to achieve 6 degrees of freedom vibration reduction.

The desktop active vibration reduction system consists of a Lorentz motor, a speed sensor and a controller to form a closed-loop control system, which implements active vibration reduction within the range of 0.7Hz-50Hz. Vibrations at frequencies above 50Hz are isolated by passive metal springs. The natural frequency of the isolation spring of the shock absorber in the three translational directions is 3Hz-5Hz. Due to the implementation of feedback and feedforward control, the minimum isolation frequency of the vibration damping table can reach 0.7Hz in six degrees of freedom.

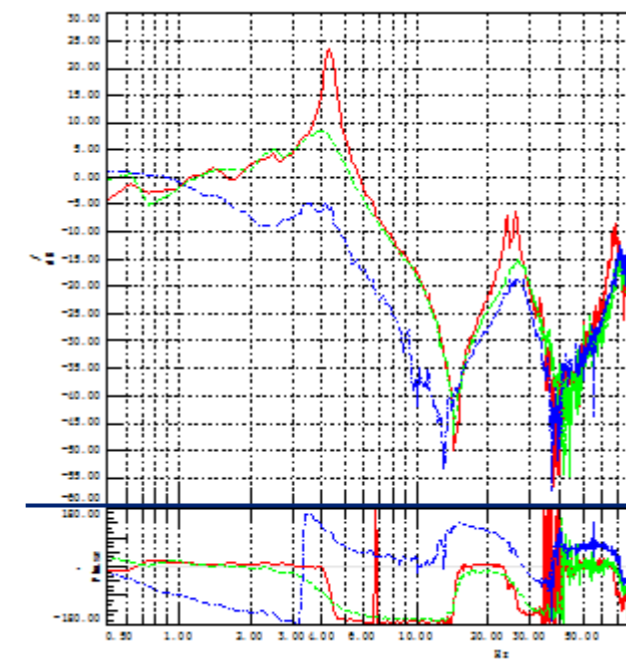
We can customize vibration damping platforms of various sizes according to user requirements. If your instruments are in irregular shape, we can design the workbench according to your requirements.

Features

- Clean room environment: purification at 10000 or above; ambient noise is less than 65dB;
- Test tools: LMS SCADASIII data acquisition system, 32-channel input module, 2-channel output module; LMS Test.Lab data analysis system;
- PCB type acceleration sensor; GS speed sensor (extended by low frequency);
- Test method: Install (place) the vibration-reducing platform on the foundation. If the surface of the foundation is uneven, add ground glue. Add an appropriate amount of load on the vibration-absorbing platform.
- Remove the four locking plates, and manually shake the vibration-isolated load to ensure that the shock absorber can work normally. Observe the Lorentz motor to ensure that there is no connection between the stator and the mover, and adjust the air gap distance reasonably.
- Turn on the speed control loop. The foundation is randomly excited, and the vibration transmission rate in the X, Y, and Z directions is tested with a PCB type acceleration sensor.
- LMS SCADASIII is used for data acquisition, and LMS Test.Lab is used for data analysis to determine the resonance point transmission rate and high frequency attenuation rate.

Specifications

| Model | Size(LxW) (mm) | Load (kg) | Transmissibility | Freedom of Degree | Min. Frequency (Hz) | Min.Frequency Transmissibility (dB) | Thrust constant (N/Amp) | Max.Power (kW) |
|--------------------|-------------------|-----------|---------------------------|----------------------|---------------------------|---|----------------------------|-------------------|
| WVIB JZX1 1000A | 900X750 | 750-1000 | see the testing curves | 6 | 0.7 | <0 | 80 | 1 |
| WVIB JZX1 1000B | 900X850 | | | | | | | |
| WVIB JZX1 1000C | 900X880 | | | | | | | |
| WVIB JZX1 1000D | 900X900 | | | | | | | |



Testing Curves



Active Vibration Isolation Table

Guide

This Series is a high-precision vibration isolation platform with multiple national patents. The platform consists of a honeycomb core optical table, a vibration isolator and a stand. The vibration isolator adopts precision metal springs to achieve passive vibration isolation, and the Lorentz motor to achieve active vibration reduction. The platform provides six degrees of freedom, high precision, vibration isolation with foundation feedback. Compared with the traditional active vibration reduction scheme, this system uses three speed sensors to realize the foundation feed-forward control, which can achieve the best vibration isolation effect in the 50Hz frequency range.

The system does not need to provide compressed air during operation, and it is easy to install and plug and play. It can adaptively adjust the foundation feedforward to achieve 6 degrees of freedom vibration reduction. Excellent value/price ratio.

The table-type active vibration reduction table consists of a Lorentz motor, a speed sensor and a controller to form a closed-loop servo control system, which can achieve active vibration reduction within the range of 0.7Hz-50Hz. Vibrations at frequencies above 50Hz are isolated by passive metal springs. The natural frequency of the isolation spring of the damping table in the three translational directions is 3Hz-5Hz. Due to the implementation of feedback control, the minimum isolation frequency of the vibration damping table can reach 0.7Hz in six degrees of freedom.

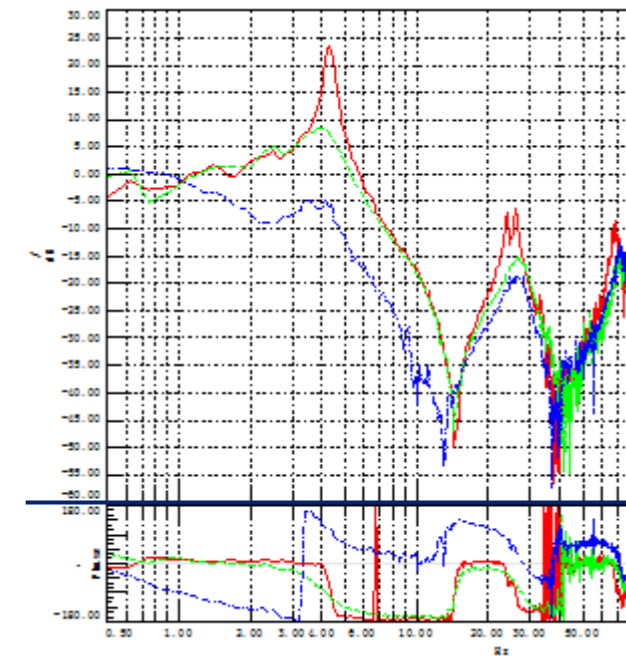
Table top with different sizes and materials can be customized according to your requirements.

Features

- Clean room environment: purification at 10000 or above; ambient noise is less than 65dB;
- Test tools: LMS SCADASIII data acquisition system, 32-channel input module, 2-channel output module; LMS Test.Lab data analysis system;
- PCB type acceleration sensor; GS speed sensor (extended by low frequency);
- Test method: Install (place) the vibration-reducing platform on the foundation. If the surface of the foundation is uneven, add ground glue. Add an appropriate amount of load on the vibration-absorbing platform.
- Remove the four locking plates, and manually shake the vibration-isolated load to ensure that the shock absorber can work normally. Observe the Lorentz motor to ensure that there is no connection between the stator and the mover, and adjust the air gap distance reasonably.
- Turn on the speed control loop. The foundation is randomly excited, and the vibration transmission rate in the X, Y, and Z directions is tested with a PCB type acceleration sensor.
- LMS SCADASIII is used for data acquisition, and LMS Test.Lab is used for data analysis to determine the resonance point transmission rate and high frequency attenuation rate.

Specifications

| Model | Table Top Size(LxW) (mm) | Load (kg) | Transmissibility | Freedom of Degree | Min. Frequency (Hz) | Min.Frequency Transmissibility (dB) | Thrust constant (N/Amp) | Max.Power (kW) |
|----------------|--------------------------|-----------|------------------------|-------------------|---------------------|-------------------------------------|-------------------------|----------------|
| WVIB JZX2 400A | 1100X950 | 250-400 | see the testing curves | 6 | 0.7 | <0 | 80 | 1 |
| WVIB JZX1 400B | 1100X1050 | | | | | | | |
| WVIB JZX1 400C | 1100X1080 | | | | | | | |
| WVIB JZX1 400D | 1100X1100 | | | | | | | |



Testing Curves